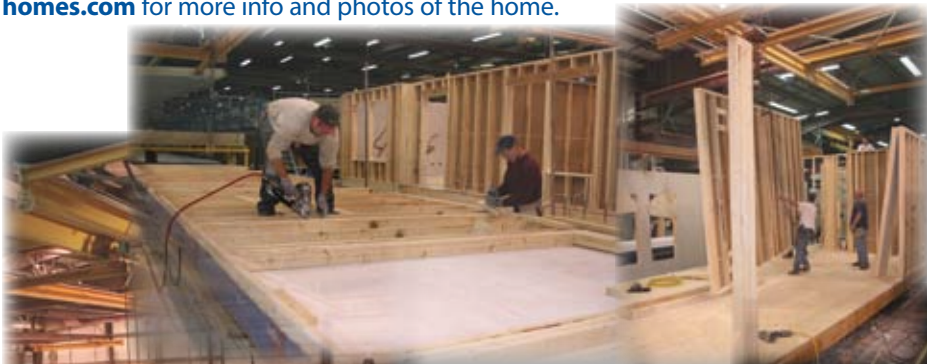


The Fabri Files

Brought to Life in Custom Fashion... An Idea Becomes Home

After much anticipation, many changes, and a lot of hard work our Custom house went on line in May. The house was definitely a site to be seen as it rolled down the line. As with any custom home we do, there were a lot of questions along the way and several adjustments. Recently the site began to be prepared and the foundation is started and should be completed by the time the newsletter prints. The set for the house is scheduled for the end of June, so weather permitting the house should be on its foundation by the time everyone receives their newsletters. Below are some of the pictures of the home during production and a couple pictures of the future site. Visit our website at www.new-era-homes.com for more info and photos of the home.



Walls are built, lifted into place, and fastened to the floor.



The floor of the home is assembled and then plumbing is added. Below the home's dormers are built.



Roof is insulated, sheeted, papered and shingled. Then home is made weather tight for transportation



Electric is run and the insulation is installed. The home is sheathed, wrapped with Tyvek, then the windows and siding are installed.



Drywall is finished and primer painted.



Kitchen cabinets are installed.



In This Issue...	
Our Featured Home	Pg. 2
Builder Tidbits	Pg. 2
Get To Know Your Team	Pg. 3
We Salute You	Pg. 3
Employee Tidbits	Pg. 3
Joe Says	Pg. 4

Featured Home- Living the New Era Lifestyle

This issue we wanted to talk about a home that is already available, but will be on display at our upcoming Fall Show for the first time. Our Richland plan was designed to optimize the most value that could be achieved from our manufacturing line. It has done just that, as the best value in a ranch floor plan in our New Century Series of homes. The three bedroom, two bath home has a spacious floor plan with an open design. The Living Room, Kitchen, and Dining Room all flow into each other. One of the distinct features of this home is the Chicago Brick Kitchen and the Chicago Brick fireplace surround that is exclusive to New Era.



At the Fall Show, you will get to see this exciting home plan! We are also going to feature the Cherry Ridge cabinetry with a Bisque Glazed Maple cabinet in this home as well. We think that this home will be a great addition to any location and a big seller!



Builder Tidbits

* M a r k your calendars for our Fall Show!!! It is September 10th - 13th!! We can't wait to see everyone there.

*Be on the look out for our newly designed website that will be launched in July!! It will be easier to use, quicker access to home plans and locating a Builder!

*Welcome aboard to our newest Builders: Silverpoint Homes and Arcadia Development Group.

2006 FALL SHOW ITINERARY

Sunday, September 10

1:00 p.m. – 5:00 p.m. Show Homes Open
6:00 p.m. – 10:00 p.m. Cocktail Hour and Buffet Dinner

Monday, September 11

8:00 a.m. – 5:00 p.m. Show homes open for viewing
Noon Lunch served at New Era
3:00 p.m. – 4:00 p.m. Sales & Marketing Presentation
6:00 p.m. – 10:00 p.m. Cocktail Hour and Buffet Dinner

Tuesday, September 12

8:00 a.m. – 5:00 p.m. Show homes open for viewing
9:00 a.m. – 2:00 p.m. Golf Scramble - Clarion Oaks Golf Club
Noon Lunch served at New Era
6:00 p.m. – 8:30 p.m. Cocktail Hour and Buffet Dinner
8:30 p.m. – 10:00 p.m. Awards Banquet

Wednesday, September 13

8:00 a.m. – 5:00 p.m. Show homes open for viewing
Noon Lunch served at New Era
3:00 p.m. – 4:00 p.m. Sales & Marketing Presentation

New Era Building Systems proudly uses the following quality products:



The New Era Team

Many of you talk to the 'New Era Team' on a daily basis, but don't know our teams history or the knowledge that we are fortunate enough to have under our roof. The following two articles below are to help you meet your New Era Team and to salute some of our most valuable assets, our employees.

Get To Know Your New Era Team

There are times when you don't realize how much you appreciate having some one in a certain position until something happens that shows how vital that person is to transition you through. Recently, I think that we all realized more than we did before that we have some one here that we kind of take for granted. The person I am speaking about is **Bob Drumm**, our Computer Information Officer.

In March as New Era was moved to the Champion server and our emails were all updated to Champion's; he was a great help to many as we all figured out the new systems. Even now as we prepare to transition to the Navision system as a plant, Bob's help has been instrumental in making the change easier on everyone. He has always been willing to go the extra mile for our company and this willingness for the last **twelve years** has helped to grow the company into what it is today. It is very easy to take your IT guys for granted until you have an issue that you need them. On a daily basis, Bob makes everyone's job easier and is there to fix our system when it needs to be.

Thanks, Bob for a job well done! Your willingness to help everyone out and knowledge is appreciated more than you probably realize!!

We Salute You

One thing that sets us apart here at New Era is the experienced team we have in our facility. This experience starts at the top and goes down through our core staff of line and office employees. **Rusty Davis**, a Foreman, is one of those people.

Rusty is the supervisor of our Drywall Department and has several people that report to him. He is an all around good guy that is well liked. Rusty's dedication and ability to do the right things for the last **thirteen years** are key factors in why our production team is so valuable. Many would tell you that drywall can not be effectively finished in a plant, but we have proven that to not be the case. It is thanks to people like Rusty who have used their experience to teach effective methods to those under him. He also is said to be the guy that will always get the answers his team needs to get the job done! In his free time Rusty is an avid bow hunter. As a side note, I've heard the rumor that his wife apparently makes "awesome" cookies.

Hats off to you Rusty for your dedication and leadership! We salute you today for all you do here at New Era!

Thanks to great people like Bob Drumm and Rusty Davis for making New Era Building Systems a class above the rest!

EMPLOYEE TIDBITS

***CONGRATULATIONS TO RICK THOMPSON ON HIS RECENT PROMOTION TO SENIOR REGIONAL SALES MANAGER AND TO DAN LAMBING ON HIS MOVE TO COSTING DEPARTMENT.**

***DON'T FORGET THE NEW ERA EMPLOYEE PICNIC IS JULY 22ND AT THE LUCINDA ANTLER CLUB!**

Your New Era Management Team

Elliot Fabri , <i>President of New Era Building Systems, Inc.</i>	Ext. 291
Ryan Bish , <i>General Manager</i>	Ext. 313
Bob Drumm , <i>Computer Information Officer</i>	Ext. 232
Chris Hepfer , <i>Engineering Manager</i>	Ext. 223
Mark Kriebel , <i>Purchasing Manager</i>	Ext. 226
Al Peters , <i>Service Manager</i>	Ext. 235
Scott Peters , <i>Director of Sales</i>	Ext. 312
Dan Rhoades , <i>Quality Control Manager</i>	Ext. 250
Dean Russell , <i>Costing Manager</i>	Ext. 292
Mike Shick , <i>Production Manager</i>	Ext. 244
Linda Slike , <i>Transportation Manager</i>	Ext. 236
Tina Wike , <i>Controller</i>	Ext. 294

New Era Building Systems proudly uses the following quality products:



KOHLER.



INNOVATIONS FOR LIVING™

July / August 2006 The Fabri Files

An Idea Becomes Home



Future site prior to and during excavation, and while foundation work was happening.



Joe Biltrite is the official New Era Building Systems "spokesperson". Joe is our builder buddy and can help

Who's that familiar face on TV?

anyone discover why New Era is the leader in our industry. Look for Joe in every issue to see what Joe will say next!!

Recently one of our employees had the honor of getting to see one of their children involved in something pretty exciting. Mark Bunch's (Safety & CI) son, Brandon, was part of the military unit featured in a Discovery Channel Special called Iraq Confidential. As a part of this Special, Jesse James (host of Monster Garage) spent time with the troops in Iraq. The Discovery Special showed James working side by side with our troops in a location in Iraq, which aired in May. Check your local listings or the Discovery Channel website for times when the show will re-air. Below are some pictures that Mark received from his son.

In Our Next Issue...

Isn't it Time for a Show...It will once again be time for the Fall Show!! Look for more on our continued documentary following one of our custom homes which has the "set" as its next stop. You'll also meet two more members of the New Era Team and another happy homeowner., plus learn what Joe will say next!

Brandon spent a year in Iraq and is currently stationed in Germany. Mark and his wife spent some time there last year visiting him. Thanks to Brandon and all the others who serve and help defend our country.



Brandon is second from the left.

The house is sealed and ready to be shipped to the site.



We welcome any comments, suggestions, or questions about The Fabri Files. Builders and New Era Personnel are welcome to submit articles, tidbits, or other items for the newsletter. Please forward all submissions or questions to Kari Nicolli, Marketing Coordinator, at New Era Building Systems. Contact information is as follows: knicolli@championhomes.net; (800) 678-5581 ext. 314



451 Southern Ave.
Strattanville, PA 16258
(800) 678-5581